

Introducing the Lancashire LINK

The logo features the word "LINK" in a bold, blue, 3D-style font. A large, white, metallic-looking link is positioned behind the letters, with its top loop overlapping the 'L' and its bottom loop overlapping the 'N'.

LINK

The logo consists of a solid black L-shaped graphic on the left. To the right of the vertical bar of the 'L' is the word "LANCASHIRE" in a bold, black, sans-serif font.

LANCASHIRE





What are LINKs?

A stronger voice in Health
and social care

An independent network

Local people, local services



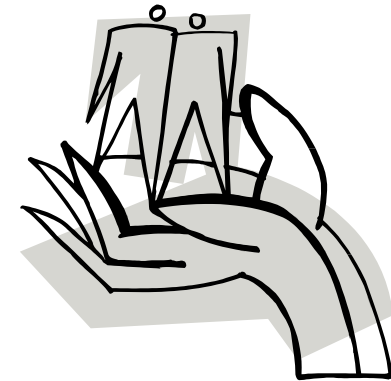
How have they been set up?

3 LINKs in Lancashire – Blackpool, Blackburn with Darwen and Lancashire

LA contracts host organisation

The LINK is independent

The host is accountable to the LINK





What is the Lancashire LINK doing?

Encouraging and supporting the community

Influencing health and social care providers and commissioners

Canvassing for views and experiences

Monitoring and reviewing

Passing on recommendations



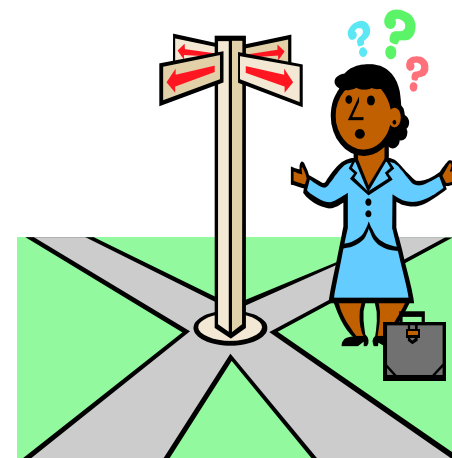


How is it doing this?

Supporting organisations, community groups and individuals

Bringing them together

Raising issues effectively



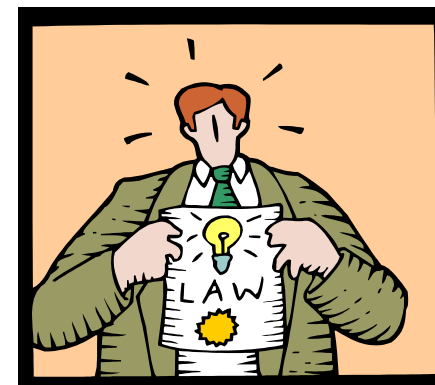


What are the powers of the LINK?

Enter and view

Get a response within a specific timescale

**Refer to local authority
Overview and Scrutiny
Committees**





Benefits of getting involved

Opportunity to make a difference

Statutory bodies will listen and respond

LINK has power to hold services to account





What's happening now?



- **LINK Interim Board**
- **LINK Locality Groups**
- **Consultation on structure**



To find out more:

Contact the Lancashire LINK Team:

Central: 01772 431195

East: 01282 714384/5/6

North: 01524 387835/6



Email: lancashirelink@blackhealthagency.org.uk

