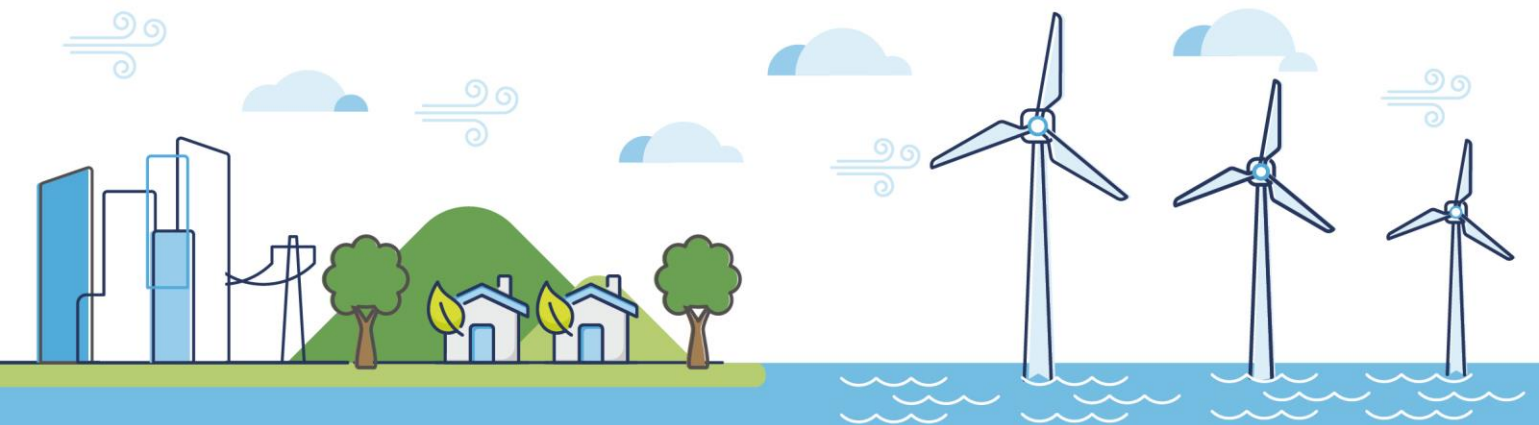


Chapter 18 Seascape, Landscape and Visual Impact Assessment Figures - 2a Visuals

Morecambe Offshore Windfarm: Generation Assets

Preliminary Environmental Information Report

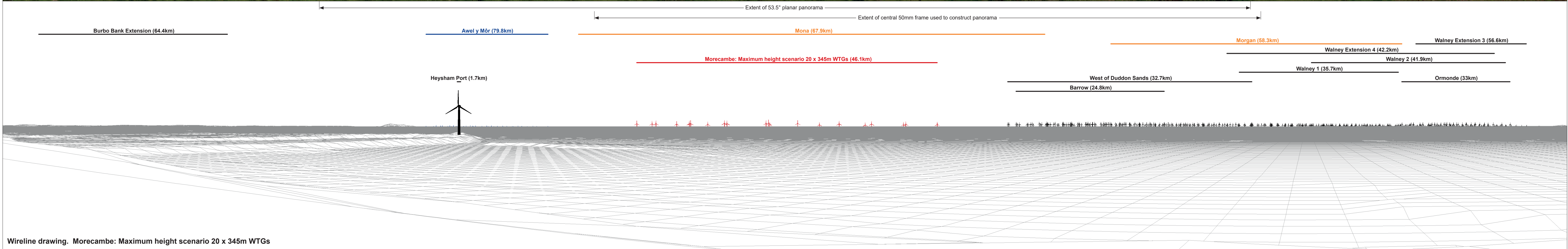
Volume 3





Baseline photograph

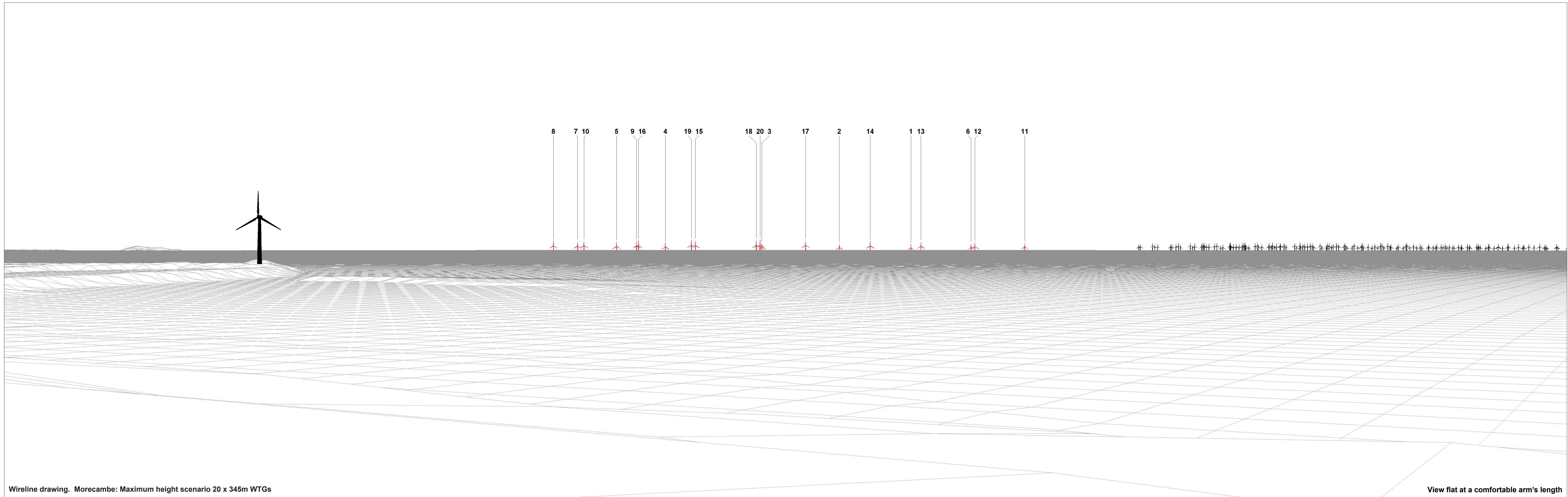
This image provides landscape and visual context only



Wireline drawing. Morecambe: Maximum height scenario 20 x 345m WTGs

OS reference:	340939 E 461567 N	Horizontal field of view:	90° (cylindrical projection)	Camera:	Canon EOS 6D
Eye level:	30.74 m AOD	Principal distance:	522 mm	Lens:	EF50mm f/1.4 USM
Direction of view:	240°			Camera height:	1.5 m AGL
Nearest turbine:	46.054 km			Date and time:	19/04/2022, 11:16

Figure: 18:32b
Viewpoint 7: Heysham Head, Chapel Hill The-Barrows



8 7 10 5 9 16 4 19 15 18 20 3 17 2 14 1 13 6 12 11

Wireline drawing. Morecambe: Maximum height scenario 20 x 345m WTGs

View flat at a comfortable arm's length

OS reference:	340939 E 461567 N	Horizontal field of view:	53.5° (planar projection)	Camera:	Canon EOS 6D
Eye level:	30.74 m AOD	Principal distance:	812.5 mm	Lens:	EF50mm f/1.4 USM
Direction of view:	240°	Paper size:	841 x 297 mm (half A1)	Camera height:	1.5 m AGL
Nearest turbine:	46.054 km	Correct printed image size:	820 x 260 mm	Date and time:	19/04/2022, 11:16

Figure: 18:32e
Viewpoint 7: Heysham Head, Chapel Hill The-Barrows



Baseline Photograph (offshore operational turbines have been rendered in this view)

View flat at a comfortable arm's length

OS reference: 340939 E 461567 N	Horizontal field of view: 53.5° (planar projection)	Camera: Canon EOS 6D	
Eye level: 30.74 m AOD	Principal distance: 812.5 mm	Lens: EF50mm f/1.4 USM	
Direction of view: 240°	Paper size: 841 x 297 mm (half A1)	Camera height: 1.5 m AGL	
Nearest turbine: 46.054 km	Correct printed image size: 820 x 260 mm	Date and time: 19/04/2022, 11:16	Figure: 18:32f Viewpoint 7: Heysham Head, Chapel Hill The-Barrows



Photomontage

View flat at a comfortable arm's length

OS reference: 340939 E 461567 N	Horizontal field of view: 53.5° (planar projection)	Camera: Canon EOS 6D
Eye level: 30.74 m AOD	Principal distance: 812.5 mm	Lens: EF50mm f/1.4 USM
Direction of view: 240°	Paper size: 841 x 297 mm (half A1)	Camera height: 1.5 m AGL
Nearest turbine: 46.054 km	Correct printed image size: 820 x 260 mm	Date and time: 19/04/2022, 11:16

Figure: 18:32g
Viewpoint 7: Heysham Head, Chapel Hill The-Barrows